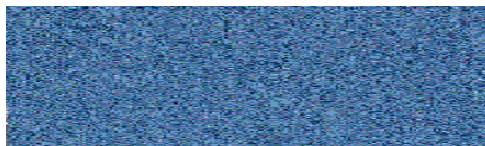
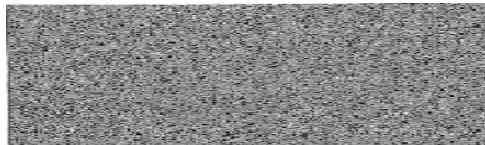
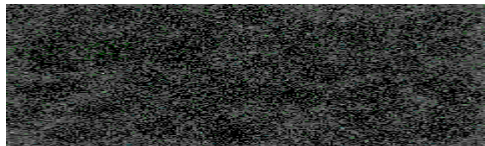
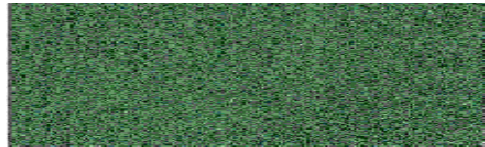
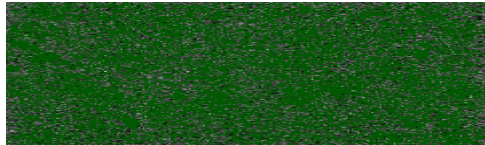


MA-SA Industries has other product for residential and industrial uses that you may be interested in:

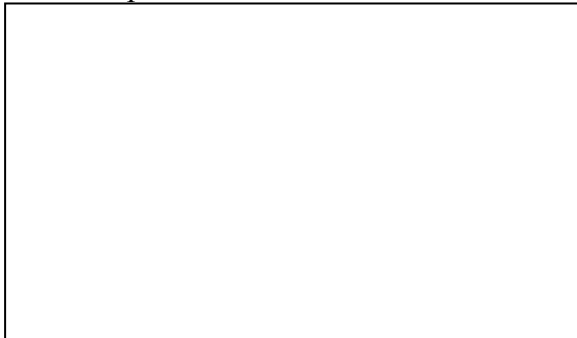
Our product

- MA-SA Solar reflective coating
- MA-SA regular color coating
- MASA Fast dry traffic marking paint
Available in White Yellow
Blue Red Black
- Transparent acrylic polymer

These are the basic color selections



For more information please contact your nearest representative



MA-SA

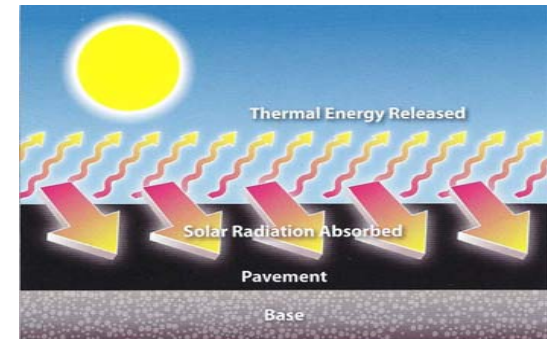
Solar Reflective Coating

Enjoy cool surfaces, cool cities, And clean air

The sun's heat limits material performance and shortens the life cycle of asphalt pavement. Heat accelerates chemical reactions, including those responsible for the degrading of physical and chemical properties.

Asphalt pavement is black, and the surface absorbs most of the sun light. The energy of the light is converted into thermal energy and the pavement gets very hot.

How sunlight affects asphalt pavement



The solution is to reflect the sunlight from heat absorbing surfaces and MA-SA SRC does just that. MA-SA SRC reflects the sun's heat away from the pavement, rather than absorbing it, reducing solar induced heat build-up - and the destructive events associated with it. MA-SA SRC provides reflective, long lasting protection with non-fading color and uniform texture to all asphalt pavements including parking lots, paths and walkways.

LEED Green Building Compliant

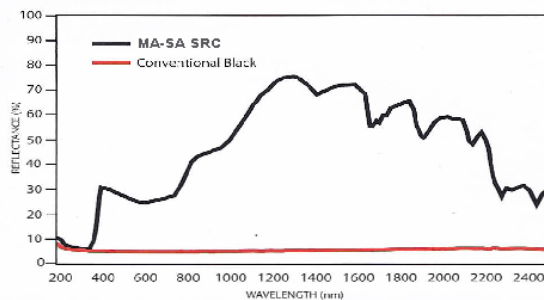
MA-SA SRC meets the LEED requirements for Sustainable Sites (55) Credit 7.1: Heat Island Effect - Non-Roof, Option 1. Use hardscape materials with a solar reflectance index (SRI) of at least 29, calculated according to ASTM E 1980.

Heat Island Reduction

MA-SA SRC reduces the stress to your pavement by lowering the temperature. This reflective coating keeps asphalt pavement up to 30% cooler than surfaces sealed with conventional sealer, providing significant benefits:

- Lowers the urban heat island effect.
- Lowers cooling loads around a building by lowering ambient temperatures, saving energy costs.
- Lowers peak energy demand.
- Reduces air pollution by lowering urban air temperatures and energy usage.
- Extends pavement life cycle by minimizing degradation and thermal expansion.

Spectral Reflectance Comparison



MA-SA SRC's reflectance far exceeds coatings

Engineered for Performance, and Sustainability

Protection: MA-SA SRC is engineered for high Performance. Premium polymers and virgin Aggregate produce a tough, flexible and long lasting coating that waterproofs your asphalt surface and protects your pavement from the destructive effects of not only the sun, but water and chemical spills.

Uniform Surface: The polymers in MA-SA SRC bind specifically graded sub angular aggregate which increases its heat diffusing and reflective qualities, as well as the durability of the even textured, skid resistant surface.

Durability: The surfactants blended into MA-SA SRC help create a superior bond between the homogenous coating and the pavement surface. MA-SA SRC lasts up to five times longer than conventional emulsion pavement sealers, offering the ultimate sustainable pavement protection.

Buyer Protection Warranty

MA-SA Industries and our national network of licensed contractors provide a 2-year written Dual Warranty for MA-SA SRC. MA-SA Industries warrants the product and the contractor warranties the installation.

Environmental Esthetics

The standard color for MA-SA is LEED gray but esthetically pleasing custom colors are also available. All shades of MA-SA Color coating are non-fading. Pure, high grade, inorganic pigments that have been tested for color stability and resistance to ultraviolet light provide rich, long-lasting color for years of service. In addition, this premium quality, polymeric coating contains no PAHs and has an extremely low VOC content.

